
CONTENTS

Warning	18
Thanks to the buyer	18
About this manual	18
Product instructional brief introduction	19
Technical parameter	20
Technical characteristic describes.....	20
Safe working instruction	21
Preparatory stage.....	22
Begin to operate	23
Friction clutch	24
Mains switch and integral over current protection.....	24
Gear speed adjustment	24
Oil soak type advantage	25
Common fault and the method of removing.....	26
Maintenance.....	27
Quality guarantee	27

Operation Manual

WARNING

To prevent electric shock or fire, please strictly abide by the procedures in the operation manual.

The machine only for the specialized persons, please do not let other people operate.

If any violation of the instructions operation and cause personal injury or machine damage, our company disclaim all responsibility.

The machine can only maintain by the people who has the certification.

THANKS TO THE BUYER

Great thanks for buying the series of diamond drill of Please read operation manual and must pay attention to safety precaution.

The right operation, will make you fully feel our products superior performance.

Please put this manual in a safe place for future reference.

ABOUT THIS MANUAL

The machine model of the description in this manual:

182 182E 202 202E 230 230E 250 250E 300 300E

350 350E 406 406E 450 450E 506 506E

250/2 250/2E 300/2 300/2E 350/2 350/2E 406/2

406/2E 450/2 450/2E 506/2 506/2E

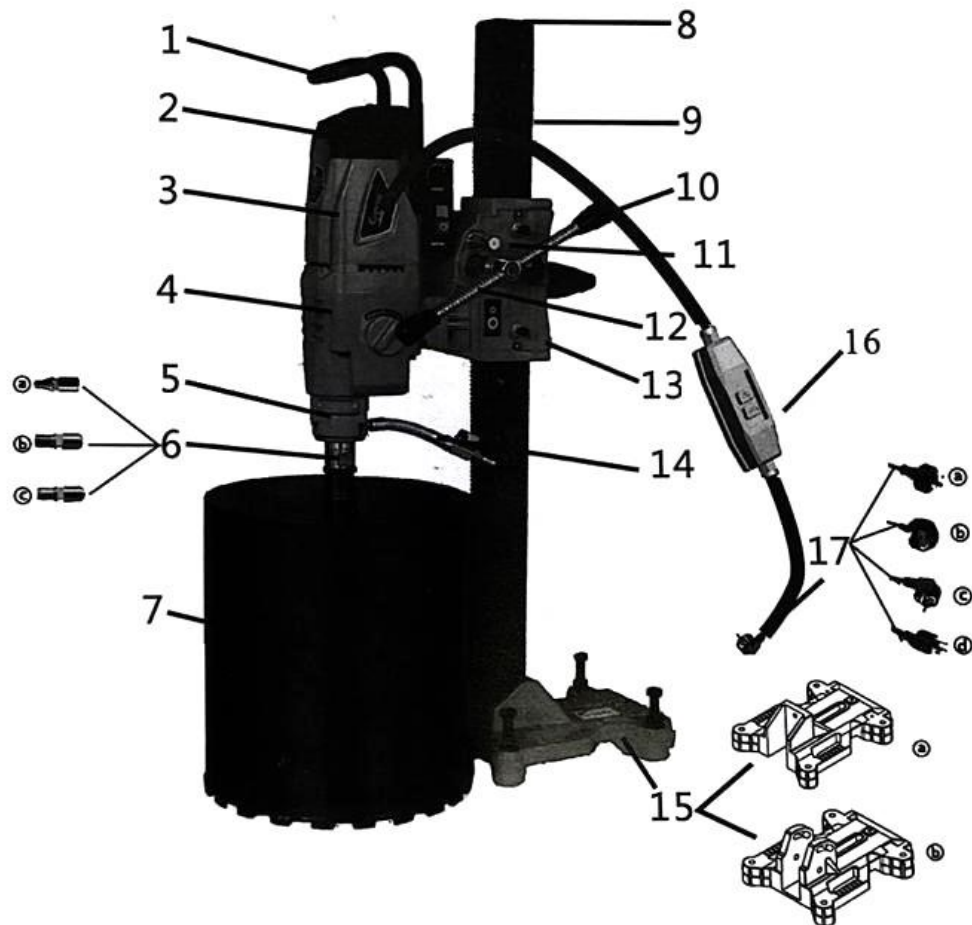
300/3 300/3E 350/3 350/3E 406/3 406/3E 450/3

450/3E 506/3 506/3E

Confirm the machine model according to the nameplate.



PRODUCE LVSTRUCTURAL BRIEF INTRODUCTION



- | | |
|--|--|
| 1.Lifted handle | 10.Bakelite ball handle |
| 2.Top cover | 11.Litre reduces ware |
| 3.Stator shell | 12.Rocker |
| 4.Gear case | 13.Litre reduces ware back shroud |
| 5.Water circle | 14.Tap |
| 6. Main shaft(a, Metricb, Thick toothc,
Square toothd, Britain makes tooth) | 15.Base(a. ordinary b. tape angle) |
| 7.Bit | 16.The protector of leakage of electricity |
| 8. Intermediate cover | 17.Plug (a.China type b.Britain type
c.Europe type) |
| 9.Square rod | |

TECHNICAL PARAMETER

Machine model	Specified voltage (V)	Rated power (W)	Rated frequency (Hz)	Corresponding rotational speed (rpm)					Biggest drill hole (mm)	
182 182E	110/200 ~	3980	50-60	640	100-640				~ 7" (~ 182)	
202 202E	110/200 ~	4280	50-60	620	100-620				~ 8" (~ 202)	
230 230E	110/200 ~	4580	50-60	600	100-600				~ 9" (~ 230)	
250 250E	110/200 ~	4880	50-60	540	100-540				~ 10" (~ 250)	
300 300E	110/200 ~	4980	50-60	360	100-360				~ 12" (~ 300)	
350 350E	110/200 ~	5280	50-60	310	100-310				~ 14" (~ 350)	
406 406E	110/200 ~	5580	50-60	280	100-280				~ 16" (~ 406)	
450 450E	110/200 ~	5680	50-60	270	100-270				~ 18" (~ 450)	
506 506E	110/200 ~	5780	50-60	220	100-220				~ 20" (~ 506)	
250/2 250/2E	110/200 ~	4880	50-60	350	100-350	500	100-500		~ 10" (~ 250)	
300/2 300/2E	110/200 ~	4980	50-60	360	100-360	570	100-570		~ 12" (~ 300)	
350/2 350/2E	110/200 ~	5280	50-60	310	100-310	480	100-480		~ 14" (~ 350)	
406/2 406/2E	110/200 ~	5580	50-60	280	100-280	440	100-440		~ 16" (~ 406)	
450/2 450/2E	110/200 ~	5680	50-60	240	100-240	380	100-380		~ 18" (~ 450)	
506/2 506/2E	110/200 ~	5780	50-60	220	100-220	360	100-360		~ 20" (~ 506)	
300/3 300/3E	110/200 ~	4980	50-60	360	100-360	540	100-540	720	100-720	~ 12" (~ 300)
350/3 350/3E	110/200 ~	5280	50-60	300	100-300	450	100-450	600	100-600	~ 14" (~ 350)
406/3 406/3E	110/200 ~	5580	50-60	280	100-280	410	100-410	550	100-550	~ 16" (~ 406)
450/3 450/3E	110/200 ~	5680	50-60	240	100-240	360	100-360	480	100-480	~ 18" (~ 450)
506/3 506/3E	110/200 ~	5780	50-60	220	100-220	350	100-350	460	100-460	~ 20" (~ 506)

To improve product constantly, our reservation does not need the right of informing in advance for technical data change.

TECHNICAL CHARACTERISTIC DESCRIBES

Above series drilling machine can only install on frame to use. This machine applies to the professional personage operating use that has gotten professional training, carries out drill hole on the materials such as rock, reinforced concrete and pitch material or take core. The diameter of drill hole exceeds 250 mm, must use high performance expansion bolt to fix. In getting into the process of cutting, cooling water flows through ball valve to go through bit, rushes to go to broken bits, is going to at the same time cool for the knife head of bit (the wet condition that gets into edge. Diamond bit, it is the pipe form drilling tool of a kind of hollow, when its front the section piece that welding (or sintering) go up and contain diamond. If be necessary, cooling water may collect through a kind of special installation (water collector).

SAFE WORKING INSTRUCTION

Pay attention: When use electric tool, to avoid that electric shock is dangerous or occur fire, please follow safe working instruction surely. Please read earnestly before manipulator ware , and keep this rules in safe place.

1. Work maintains the working environment with neat place and confused internal organs to be easy more to arouse accident.
2. Begin work is former, as working environment carries out necessary cleaning, can't use electric tool in rain, cannot when being near to burn angry local use electric tool.
3. To avoid electric shock, please do not directly contact earthing parts with hand as metal pipeline, heating pipeline, stove or coal-scuttle .
4. Cannot make child be near Please do not let have not received contact line cable or the people manipulator ware of professional training, please let be unconcerned people to be far away from working place.
5. Guarantee that tool is stocking and safe. The electric tool that not used should be kept in the place that is dried and is far away from child.
6. Do not make your electric tool overloaded , can develop the fine performance of machine fully more in specified load scope.
7. Dress correct protection clothes Cannot wear very comfortable clothing or wear jewelry, otherwise be twined very much by the revolving part of machine occur danger. Manipulator ware , suggest to put on ear shield and rubber gloves , wear to guard against slippery shoes in enter the plate of long hair safety helmet.
8. If inconvenience. May install machine connection to aspiration.
9. Cannot use line cable to do other use cannot use line cable to drag Ye machine, can't Ye line cable pulls out plug.
10. Cannot over bend waist , avoid that body adopts unusual attitude. Ensure you to stand position safety maintains body balance.
11. Please protect your machine properly, in order to make it develop function normally when it is working. Please follow working instruction when changing tool. Often inspect machine from tape line cable , ensure to have no breakage, maintaining handle to be dried have no oil.
12. Machine does not use for a long time, before defending machine or before changing bit, please pull out the plug of power source.
13. Cannot stay in the spanner of handling bit bit is above, before starting machine, ensure that spanner has left bit.
14. Avoid accident start machine. When moving to put through the machine of power source , cannot put finger on switch. Ensure that before plug is being inserted into socket, machine switch is in the location that stops.
15. In outdoor manipulator ware, please use the cable of extension line that accords with safe requirement.
16. In unit process of cargo bandling must notice concentration, do not when excessiveness tiredness, after wine, finish drill with the condition of taking medicine to make tool.
17. The type of generator speed adjustment or gear speed adjustment in work please select the adaptive bit of appearance, and open speed most quickly, so machine reach best state. If rig in working process rock , must close machine to inspect the concentric degree of bit and main shaft , can damage machine otherwise to occur danger.

18. Pay attention: For your personal benefit, please choose original factory accessory. If not original factory accessory is chosen, it may produce injury for operator or the very machine.

PREPARATORY STAGE

It may use additional tool, is completed in order to go off work to do if please install and join you according to step for diamond drilling machine.

Pay attention: Before joining, must guarantee that the switch of main computer is in the state that stops.

Step 1: Comparing with the inspection of container load plan, machine and parts open package, inspect machine in transportation process, whether damage, inspection the voltage of building site whether the voltage that shows on name plate is consistent, contrast container load plan sees the attachment in package whether is complete.

Step 2: Power source joins, according to a standard EN61029 and a IEC1029-2 6 of European Union, taking the diamond drilling machine of water schoolwork must add to pack the protector of leakage of electricity, the socket of power source must carry out earthing. It is consistent with these safe rules, our product matches have packed the protector of leakage of electricity, its function, including leakage of electricity are protected until with under-voltage to deduct. Insert the plug of power source well after, the switch face plate of the protector of leakage of electricity must ensure that is in ON (beginning) location. Fall if arising voltage drop, the protector of leakage of electricity will automatic everything breaks, once after voltage normal, should operate the protector of leakage of electricity again in REST cubes (reset) location. The protector of leakage of electricity specified movement current is 30mA.

Pay attention: Quote clean source of water surely, contain grit waiting for until the water of impurity may damage the water set sealing ring of machine, biggest hydraulic pressure is 3BAR.

Step 3: Source of water joins, the random ware additional water inlet of flexible tube holds to have "fast joint" may join to wire reinforced suction hose very conveniently on water supply system.

Pay attention: If the protector function of leakage of electricity is not normal, please do not want manipulator ware.

Step 4: Safety is tested, pressing generator switch and machine (soft start switch) start smoothly. Press the protector button of leakage of electricity of "test", machine stops operation, then resumes the power supply for machine again according to the button of "reset".

Pay attention: Must cannot soak the protector of leakage of electricity in water. Must often pass according to press TEST button, come to inspect its function whether is normal. Suggesting operator not to operate do not take the diamond drilling machine of the protector of leakage of electricity.

BEGIN TO OPERATE

1. Choose suitable diamond bit

The main shaft of our company deducts 4 kinds uses type frequently, please choose the reliable diamond bit of quality. Choose sharp tool, And ensure that diamond knife is first to have enough backlash (the thickness of knife head the thickness that is larger than tube wall, such do good to more in row bits) between metal tube wall. It is above that using waterproof oil paint in the bit to deduct, in order to make dismantling bit convenient. Ensure bit way jump do not be larger than 1 mm (eccentricity).

2. Fix frame in face

Regular method has expansion bolts to fix; vacuum sucker is fixed; supports regular etc..

The most general method is fixed for expansion bolt, please use the diameter of metal expansion bolt and bolt as far as possible, must be larger than 12 mm. Using vacuum sucker fix, ensure that vacuum pump has enough efficiency, sealing ring complete have no breakage. Adopting support ensure when fixing way that frame has enough stability.

Fix using expansion screw regular way, first, will guarantee that face and the base of machine will be balanced, if have, it is high! Please use the spanner that takes in machine attachment for low injustice, the 4 adjustment screws on regulation base are balanced till base. After being fixed completely, machine should guarantee that generator will not slide on rack. And will make efforts around around pull to move pillar, will guarantee that when pillar is not around, sway side may use machine.

Pay attention: Our company suggests to use expansion bolt regular way to fix vigorously, and the location of expansion screw lets egg to pillar direction to be near is best. Since fixing consequence our company that not causes firmly, do not undertake any duty.

3. Begin drill hole

This rig is let only to have accepted the professional personage of related training to use, may realize the drill hole on the materials such as rock, reinforced concrete and pitch or take core. Please carry out operation surely according to working instruction.

Pass through ball valve, lead into adequate source of water, so as make broken bits have been rushed thoroughly, if the mud water mixture that forms fills fully a machine that get into, you will not lead into adequate source of water. Please give bit according to requirement with feed pressure, otherwise, diamond l of bit top may be polished, the efficiency of such drill hole will reduce greatly. Sometimes, bit knife head may go on open on SIC material it makes bit not to tremble that edge P asks notice, otherwise the diamond on carcass may drop.

When getting into to cut to meet metal material, please change to use low speed, and increase feed pressure. When appearance blocks to get into, does not want in order to open, the way of closing machine comes to go on loose please close machine at once, it is loose that using spanner to pull around to move bit go on put aside machine carefully drill hole.

Vertical upward drill hole, must ensure special turn water to obtain basin, guard against generator strictly cannot enter water. In working error any suspension, open only to start machine road can. Ensure to take the charge of machine fear start former bit may turn freely. Is not blocked in hole.

FRICION CLUTCH

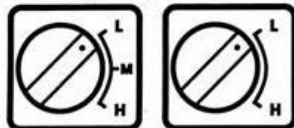
Clutch carries out protection under high-strength mechanical overload condition for operator, machine and bit. Please ensure clutch in a separation state goes off work to do not exceed 3-4 second, because it will cause temperature rise quickly and causes wear for friction flat that time passes length.

MASTER SWITCH AND OVERLOAD PROTECTIVE DEVICE

After pressing switch, machine (soft start switch) starts smoothly.If machine is overload, its electron protects switch, will remind operator machine to be overload with exceptional fluctuation. If load does not be reduced , after some seconds of clocks, switch is closed voluntarily. Start again if remove load, machine will again start smoothly. When start machine again is former, ensure bit may turn freely is not blocked in drill hole. It will even burn out for that generator causes serious infringement if this machine highest compression is higher than 260 V for 260 V. When using generator to supply power , must notice that voltage peak value cannot be higher than 260 V.

GEAR SPEED ADJUSTMENT

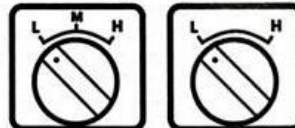
Ordinary gear speed adjustment



3 files

2 files

Oil soaks money gear speed adjustment



3 files

2 files

To improve the efficiency of drilling, some machines have 3 type gear speed changes. In it is high to divide , high speed files (the day files) apply to little bit and more soft material to rush , fast files (M files) apply to in bit and more hard material; The files of low speed (L files) apply to big bit and hard material.

- ▲ Machine turns under stoping the state that turns or stops soon to move group change files.
- ▲ Machine must want to shift gear to position when shifting gear , if occur main shaft after start,it does not turn or have tooth sound to explain that files position does not hang to position , must close switch at once, and turn again move knob to the position that needs files at the same time round trip turns main shaft (hang files easily), have obvious put into gear to block until position.
- ▲ Must close mains switch at once, round trip turns main shaft to at the same time turn to move knob. Machine is operating at full speed, load or card please don't change files when living.

L is the files of low speed, H is high speed files, M is the files of middling speed(3 files types), graphic representation is the files of low speed, spin along hour hand if by the files of low speed, turning high speed files knob, otherwise counter-clockwise.

OIL SOAK TYPE ADVANTAGE

Oil soak type diamond drilling machine is a kind of can on reinforced concrete, brick stone, rock, porcelain and fire-resistant material the new tool of drill hole. The equipment that applies to is installed , water power the constructions such as installation and tunnel , installation field. It has very good sealing for liquid oil, that oil soaks the aluminum processing of high accuracy of money machine, and weather strip produces expansion force, will not also arise the phenomenon that leaks oil.

OIL SOAK TYPE ADVANTAGE

It may make with high speed revolving gear service life raise the time of 2 a 3 timeses if oil soaks the liquid oil of money machine, and gear has no noise when occluding.

It has to endure the property with wear-resisting high rotational speed , that oil soaks the capsulation of money machine. And service life is long.

COMMON FAULT AND THE METHOD OF REMOVING

Fault	Reason	The method of removing
Generator does not turn	Power source is obstructed , or contacts to loosen to fall	Resume power source , inspect all joints and tighten
	Carbon brush blocks , take off open commutator	New installation carbon brush
	After the protector movement of leakage of electricity, do not reset	Press reset button to start generator again
	The protector damage of leakage of electricity	Change the protector of leakage of electricity
Drill hole is too slow	Bit life has arrived	Change bit
	Feed pressure is too low	Increase feed pressure
	Bit knife first surface is pasted by thin bits	Clean bit, increase hydraulic pressure
	Rotational speed is too high	Switch the files position of low speed
	It is slippery to cut thick reinforcing bar to hit	Feed pressure reduces is little after,will cross reinforcing bar increase pressure again
	In processing hole, amass bits	Put in order hole bottom. Pressurization
	Current does not be obeied , leakage or have no reflux	Inspect into the valve of water polo , inspect current
	Bit sharp degree reduces	Using fire-resistant brick or emery wheel open edge again
Bit blocks	The leather or broken bits piece of reinforcing bar blocks , is geting into core between bit or between bit and hole wall, frame fixes , is not firm , it is exceptional to produce displacement frame pillar and the gap of sliding sleeve.	Stop machine , turn bit around spanner, or pull out bit to knock broken get into heart to fix the frame adjustment gap of sliding sleeve again.
Bit wall wear is rapid	Main shaft not just	Repair or change main shaft
	Bit not just	Change bit
	Reinforcing bar or thin bits can not remove hole outside	Improvement current, take out bit , clean hole
Water set leakage	The skeleton wear or ageing of sealing ring	Change skeleton sealing ring

MAINTENANCE

Pay attention: When carry out machine maintenance is former, must will the plug of power source of machine breaks open.

Use the rag clean machine , cannot use water to spray to wash , ensure that machine generator and switch box do not enter water. Ensure that air-breather is unblocked and clean , clean the main shaft to deduct and paint oil.

◆ Liquid oil-lubricated gear

After machine amounts to 300 hours of work, professional follows following program consummately or strictly: Should change gear lubricating oil. It is from authority that please ensure this work repair station will machine is vertical under (the dynasty of main shaft) fix. Loosen gear case shell goes up 3 6 angle screws, take generator and intermediate cover , change gear lubricating oil, please use the brand lubricating oil that our company designates. According to dismantle in proper order new assembly, and it is correct to ensure to install.

Pay attention: If arise the leakage of lubricating oil, close machine immediately , will damage gear otherwise.

◆ Water set sealing ring

If cooling water leaks from water place, please change i immediately, the professional who should repair station by authority by and this work is completed.

◆ Carbon brush

Machine amounts to 300 hours of work afterwards, should inspect carbon brush whether needs change. All maintenances about generator should be completed by professional.

QUALITY GUARANTEE

In machine 6 months when customer purchases our production , enjoy free maintenance and regular me but K engages in. When use normally is overall or accessory occurs pour the product fault that 7 workmanships or components cause , please rely on receipt original, dealer stamps and fills the proof of good repair to our or our designated repair station to enjoy free service.

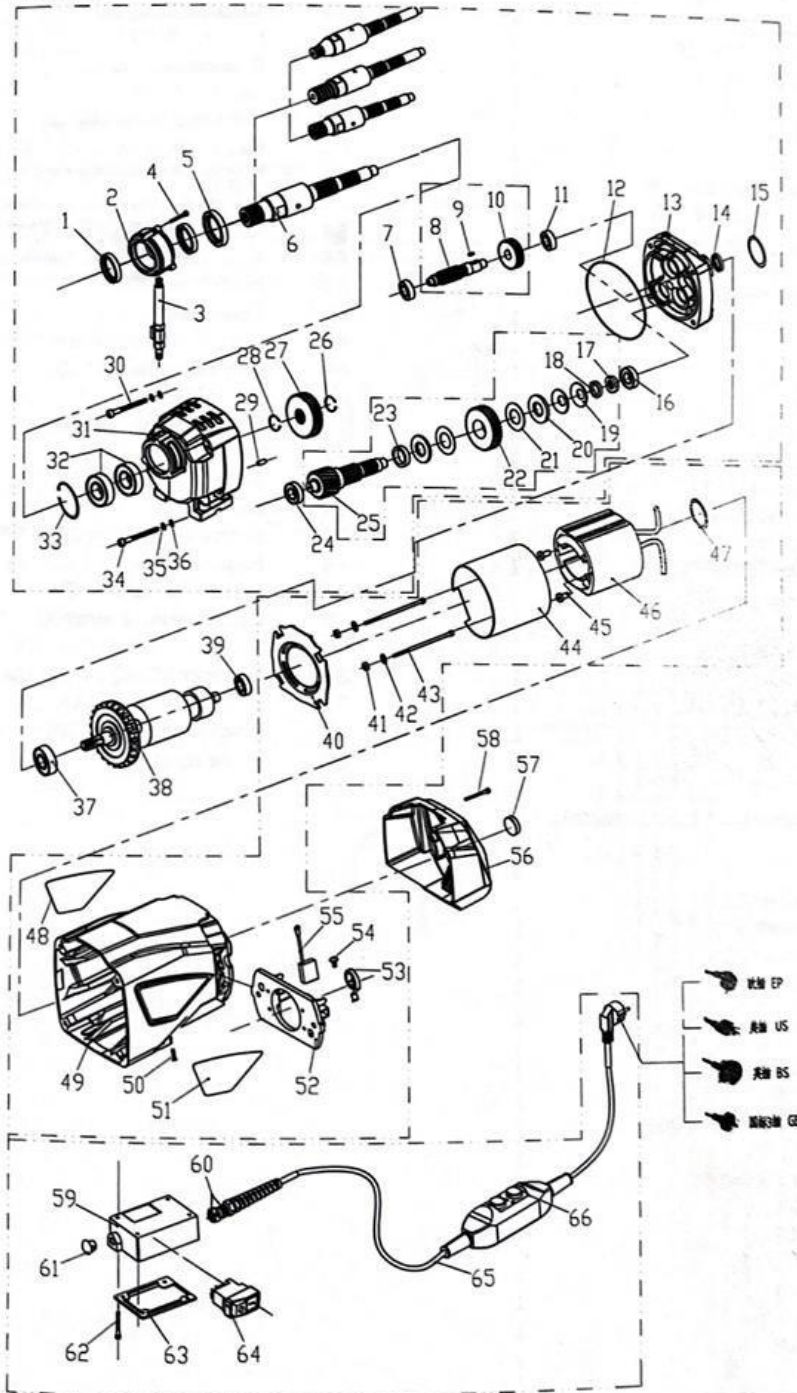
The normal wear of machine fragile , is overload , do not operate according to working instruction , dismantle independently the damage that causes as well as because of this use: The damage besides company that accessory causes does not belong to the scope of good repair. After expiring , good repair offers paid repair service from designated repair station. Maintenance log must stamp or sign by repair station to just come into effect.

※Since fixing consequence our company that not causes firmly , do not undertake any responsibility!

NO.	Parts name	QTY
1	Water seal 40 * 50 * 7	2
2	Water Circle 200D	1
3	Hose faucet 200-EU	1
4	Hegonal screw M5 * 18	3
5	Oil seal 40 * 50 * 7	1
6	Spindle KF-200	1
7	Bearing 6201	1
8	Class I tooth shaft 200D-2(15)	1
9	Marketing 4 * 10	1
10	Class I gear 200D-1(7)	1
11	Bearing 6201	1
12	O-ring ϕ 130 * 2	1
13	Middle cover 200D	1
14	Oil seal 15 * 21 * 3	1
15	O-ring ϕ 35 * 2	1
16	Bearing 6201	1
17	Nut 200	1
18	Iron Ring 200-2	1
19	Curved bullet pad 200A	2
20	Flesh iron 200A	2
21	Separation film 200A	2
22	Class II gear 200D-3	1
23	Ring 250	1
24	Bearing 6201	1
25	Class II tooth shaft 200D-4	1
26	Card 22	1
27	Spindle gear 250-5	1
28	Card 24	1
29	Cylinder ϕ 4 * 12	1
30	Hegonal screw M6 * 85(half tooth)	2
31	Gear box 200D	1
32	Bearing 6005	2
33	Inner card 47	1
34	Hegonal screw M6 * 110(half tooth)	2
35	Pad M6	4
36	Pad M6	4
37	Bearing 6202	1
38	Rotor DK-202	1
39	Bearing 6201	1
40	Breeze 200D	1
41	Loose nut M5	2
42	Pad M5	2
43	Hegonal screw M5 * 105(half tooth)	2
44	Interior 200A	1
45	Insulation sleeve 200A	2
46	Stator DK-202	1
47	O-ring ϕ 38 * 3.1	2
48	Business Sign DK	1
49	Stator hull 200D	1
50	Cross level screw M4 * 8	1
51	Parameter card DK(92.5 * 40.3)	1
52	Brush frame 200D	1
53	Bypass 200A	2

NO.	Parts name	QTY
54	Round Head Cross Screw M4 * 8(Copper)	2
55	Carbon Brush 200A	2
56	Cover 200D	1
57	Horizontal instrument ϕ 16 * 8	1
58	Hegonal screw M4 * 10	2
59	Switch Box 200A-FS	1
60	Fold proof connector M16 * 1.5	1
61	Button head SKT-10	1
62	Hegonal screw M4 * 45	4
63	Switching box cover 200A-FS	1
64	Electromagnetic switch KJD17B	1
65	Power cord 3 * 1.0 * 3.5 M	1
66	Leakage protector PD16	1

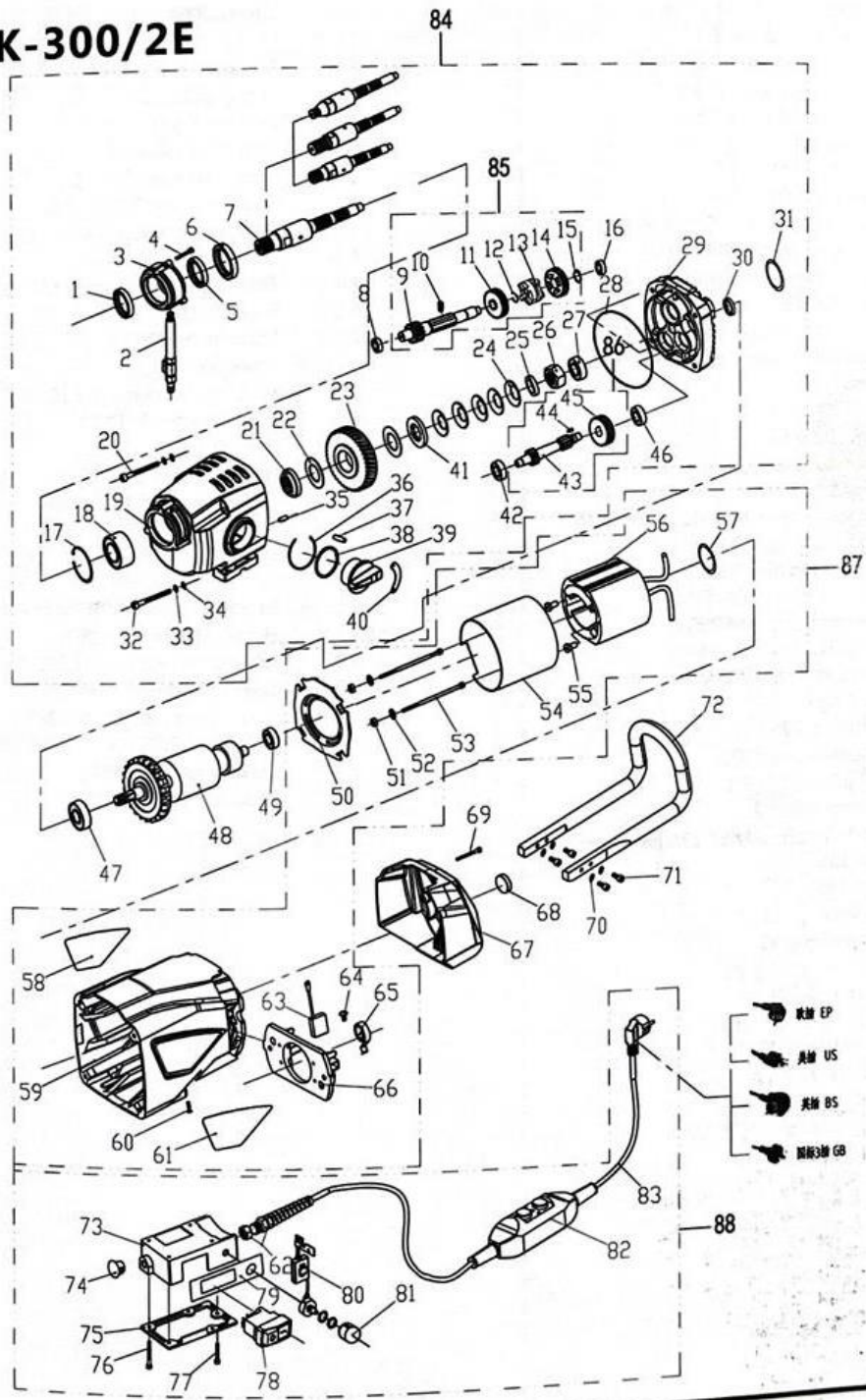
DK-202



NO.	Parts name	QTY
1	Water seal 40 * 50 * 7	1
2	Hose faucet 200A-EU	1
3	Water Circle 250D	1
4	Hegonal screw M5 * 18	3
5	Water seal 40 * 58 * 8	1
6	Oil seal 40 * 55 * 7	1
7	Spindle 250A	1
8	Bearing 6202	1
9	Class II tooth shaft 250A-4(14)	1
10	Ball head plunger M8 * 15	1
11	Type II High Speed Gear 250A/2 -5	1
12	Stop Ring 18	1
13	Class II sliding gear 250A/2 -4	1
14	Type II low-speed gear 250A/2 -3	1
15	Card 16	1
16	Bearing 6201	1
17	Inner card 52	1
18	Bearing 3205	1
19	Gear box 250D.	1
20	Hegonal screw M6 * 125(half tooth)	2
21	Hand-key pad 200A(11)	1
22	Separation film 200A	2
23	Spindle gear 250A-5(14)	1
24	Curved bullet pad 200A	5
25	Ring 250	1
26	Separation nut 200A	1
27	Bearing 6202	1
28	O-ring ϕ 135 * 2	1
29	Middle cover 250D	1
30	Oil seal 15 * 21 * 3	1
31	O-ring ϕ 35 * 2	2
32	Hegonal screw M6 * 135(half tooth)	2
33	Pad M6	4
34	Pad M6	4
35	Cylinder pin 4 * 12	1
36	Stop ring ϕ 40	1
37	Cylinder pin 5 * 25	1
38	O-ring ϕ 38 * 3.1	1
39	Dialing knob 250D	1
40	File plate 250A/2	1
41	Flesh iron 200A	1
42	Bearing 6201	1
43	Class I tooth axis 250A/2 -2	1
44	Marketing 4 * 10	1
45	Class I gear 250D-1(7)	1
46	Bearing 6201	1
47	Bearing 6202	1
48	Rotor DK-300 / 2E	1
49	Bearing 6201	1
50	Breeze 200D	1
51	Loose nut M5	2
52	Pad M5	2
53	Hegonal screw M5 * 105(half tooth)	2

NO.	Parts name	QTY
54	Interior 200A	1
55	Insulation sleeve 200A	1
56	Stator DK-300 / 2E	2
57	O-ring ϕ 38 * 3.1	1
58	Business Sign DK	1
59	Stator hull 200D	1
60	Cross level screw M4 * 8	1
61	Parameter card DK(92.5 * 40.3)	1
62	Fold proof connector M16 * 1.5	1
63	Carbon Brush 200A	2
64	Round Head Cross Screw M4 * 8(Copper)	2
65	Bypass 200A	2
66	Brush frame 200D	1
67	Cover 200D	1
68	Horizontal instrument ϕ 16 * 8	1
69	Hegonal screw M4 * 10	2
70	Pad M5	4
71	Hegonal screw M5 * 10	4
72	Curved handle 200D	1
73	Switch Box 200A-T-FS	1
74	Button head SKT-10	1
75	Switching box cover 200A-T-FS	1
76	Hegonal screw M4 * 50(half tooth)	4
77	Hegonal screw M4 * 25	1
78	Electromagnetic switch KJD17B	1
79	Speed adjustment label SCY	1
80	Governor SCYRQ DG ZQ-18A	1
81	Speed control knob KN-8D	1
82	Leakage protector PD16	1
83	Power cord 3 * 1.5 * 3.5 M	1

DK-300/2E



- 欧洲 EP
- 美国 US
- 英国 BS
- 国际 GB

NO.	Parts name	QTY	NO.	Parts name	QTY
1	Water seal 40 * 50 * 7	1	54	Interior 200A	1
2	Hose faucet 200A-EU	1	55	Insulation sleeve 200A	2
3	Water Circle 250D	1	56	Stator DK-300 / 3E	1
4	Hegonal screw M5 * 18	3	57	O-ring φ 38 * 3.1	1
5	Water seal 40 * 58 * 8	1	58	Business Sign DK	1
6	Oil seal 40 * 55 * 7	1	59	Stator hull 200D	1
7	Spindle 250A	1	60	Cross level screw M4 * 8	1
8	Bearing 6202	1	61	Parameter card DK(92.5 * 40.3)	1
9	Class II tooth axis 250A/3 -6(14)	1	62	Fold proof connector M16 * 1.5	1
10	Ball head plunger M8 * 15	1	63	Carbon Brush 200A	2
11	Type II High Speed Gear 250A/3 -5	1	64	Round Head Cross Screw M4 * 8(Copper)	2
12	Stop Ring 18	1	65	Bypass 200A	2
13	Class II sliding gear 250A/3 -4	1	66	Brush frame 200D	1
14	Type II low-speed gear 250A/3 -3	1	67	Cover 200D	1
15	Card 16	1	68	Horizontal instrument φ 16 * 8	1
16	Bearing 6201	1	69	Hegonal screw M4 * 10	2
17	Inner card 52	1	70	Pad M5	4
18	Bearing 3205	1	71	Hegonal screw M5 * 10	4
19	Gear box 250D.	1	72	Curved handle 200D	1
20	Hegonal screw M6 * 125(half tooth)	2	73	Switch Box 200A-T-FS	1
21	Hand-key pad 200A(11)	1	74	Button head SKT-10	1
22	Separation film 200A	2	75	Switching box cover 200A-T-FS	1
23	Spindle gear 250A-5(14)	1	76	Hegonal screw M4 * 50(half tooth)	4
24	Curved bullet pad 200A	5	77	Hegonal screw M4 * 25	1
25	Ring 250	1	78	Electromagnetic switch KJD17B	1
26	Separation nut 200A	1	79	Speed adjustment label SCY	1
27	Bearing 6202	1	80	Speed control knob KN-8D	1
28	O-ring φ 135 * 2	1	81	Governor SCYRQ DG ZQ-18A	1
29	Middle cover 250D	1	82	Leakage protector PD16	1
30	Oil seal 15 * 21 * 3	1	83	Power cord 3 * 1.5 * 3.5 M	1
31	O-ring φ 35 * 2	2			
32	Hegonal screw M6 * 135(half tooth)	2			
33	Pad M6	4			
34	Pad M6	4			
35	Cylinder pin 4 * 12	1			
36	Stop ring φ 40	1			
37	Cylinder pin 5 * 25	1			
38	O-ring φ 38 * 3.1	1			
39	Dialing knob 250D	1			
40	File plate 300A/3	1			
41	Flesh iron 200A	1			
42	Bearing 6201	1			
43	Class I tooth axis 250A/3 -2	1			
44	Marketing 4 * 10	1			
45	Class I gear 250D-1(7)	1			
46	Bearing 6201	1			
47	Bearing 6202	1			
48	Rotor DK-300 / 3E	1			
49	Bearing 6201	1			
50	Breeze 200D	1			
51	Loose nut M5	2			
52	Pad M5	2			
53	Hegonal screw M5 * 105(half tooth)	2			

DK-300/3E

